

HOW TO INSTALL R4-L1 ON BERGMANN MP906/MP907 COMPACTOR



HOW TO INSTALL R4-L1 MONITORING DEVICE ON BERGMANN MP907/MP907 COMPACTOR



Version 2/21, emission date 11th March 2021

HOW TO INSTALL R4-L1 ON BERGMANN MP906/MP907

TABLE OF CONTENTS

1	INTRODUCTION	2
2	INSTALLATION PROCEDURE	2
3	HOW TO CONNECT R4-L1 TO BERGMANN MPB906 / MPB907	3
3.1	R4-L1 Cabling for Bergmann MPB906 / MPB907	3
3.2	Bergmann wiring diagrams.....	4
4	CONTACT US	7

HOW TO INSTALL R4-L1 ON BERGMANN MP906/MP907

1 INTRODUCTION

Every monitoring system is pre-assembled before shipment, based on the electrical schematics available. The technician who will perform the installation of the R4-L1 on the compactor, has to cable the multi-wire brown cable directly on the electric box of the compactor following the table at chapter 3.1 and connect the antenna to the R4-L1.



To perform the installation, please follow the procedure at chapter 2. In case the compactor model is different, please contact our support.

2 INSTALLATION PROCEDURE

1. Place the plastic fixing case in a protected/safe area.
2. Following the table at chapter 3.1 to cable the R4-L1 brown cable to the compactor electrical box.
3. Antenna should be positioned in a favorable place for best signal.
4. Insert the antenna cables into the monitoring system case passing through opening and successively connect the GSM connectors (purple) to input 41 and GPS connectors (blue) to input 42.



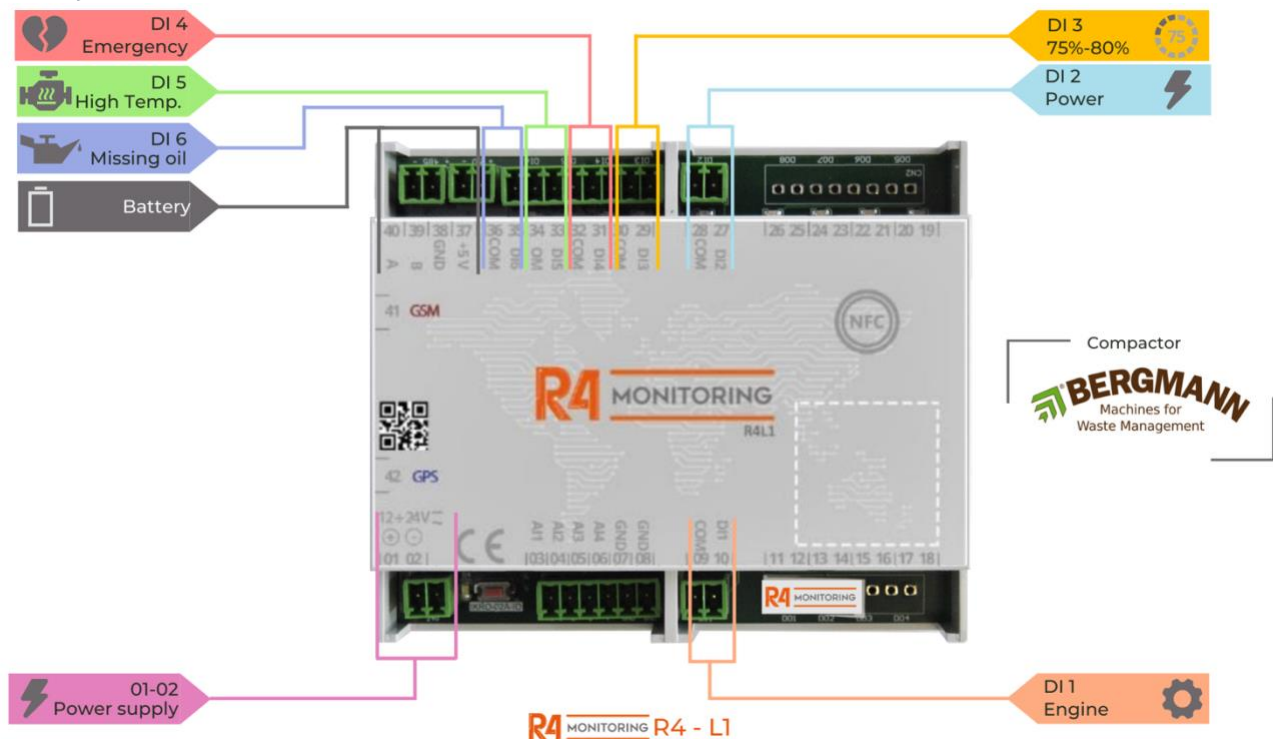
5. Connect monitoring prearranged cable.
6. After installing the antenna, remove the labels that stick out from the battery.

HOW TO INSTALL R4-L1 ON BERGMANN MP906/MP907

3 HOW TO CONNECT R4-L1 TO BERGMANN MPB906 / MPB907

3.1 R4-L1 Cabling for Bergmann MPB906 / MPB907

In the image below is reported the meanings of each digital input of the monitoring system.

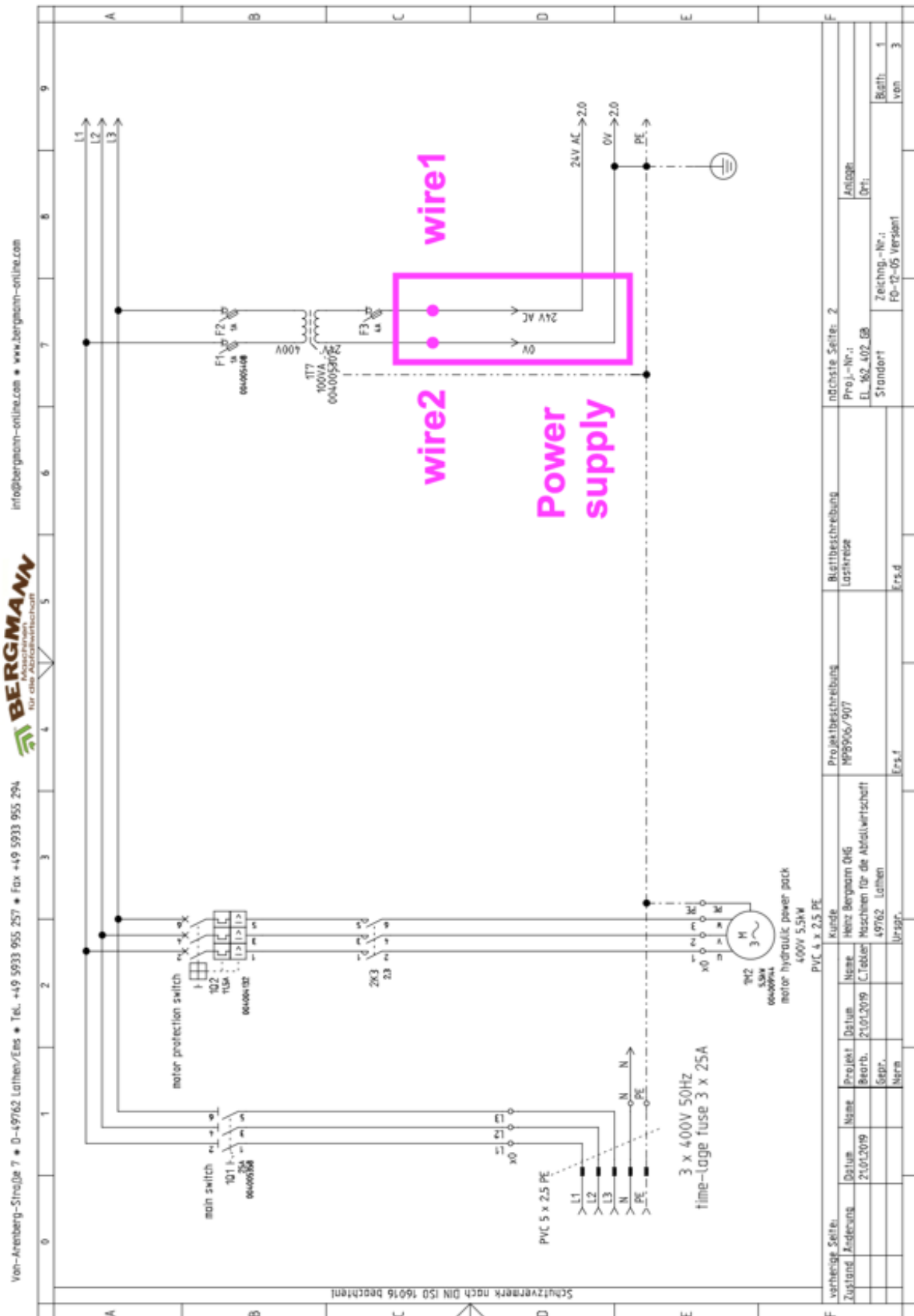


With reference to chapter 2 and chapter 3.2, in the table below is reported how to cable the brown multi-wire R4-L1 on the compactor.

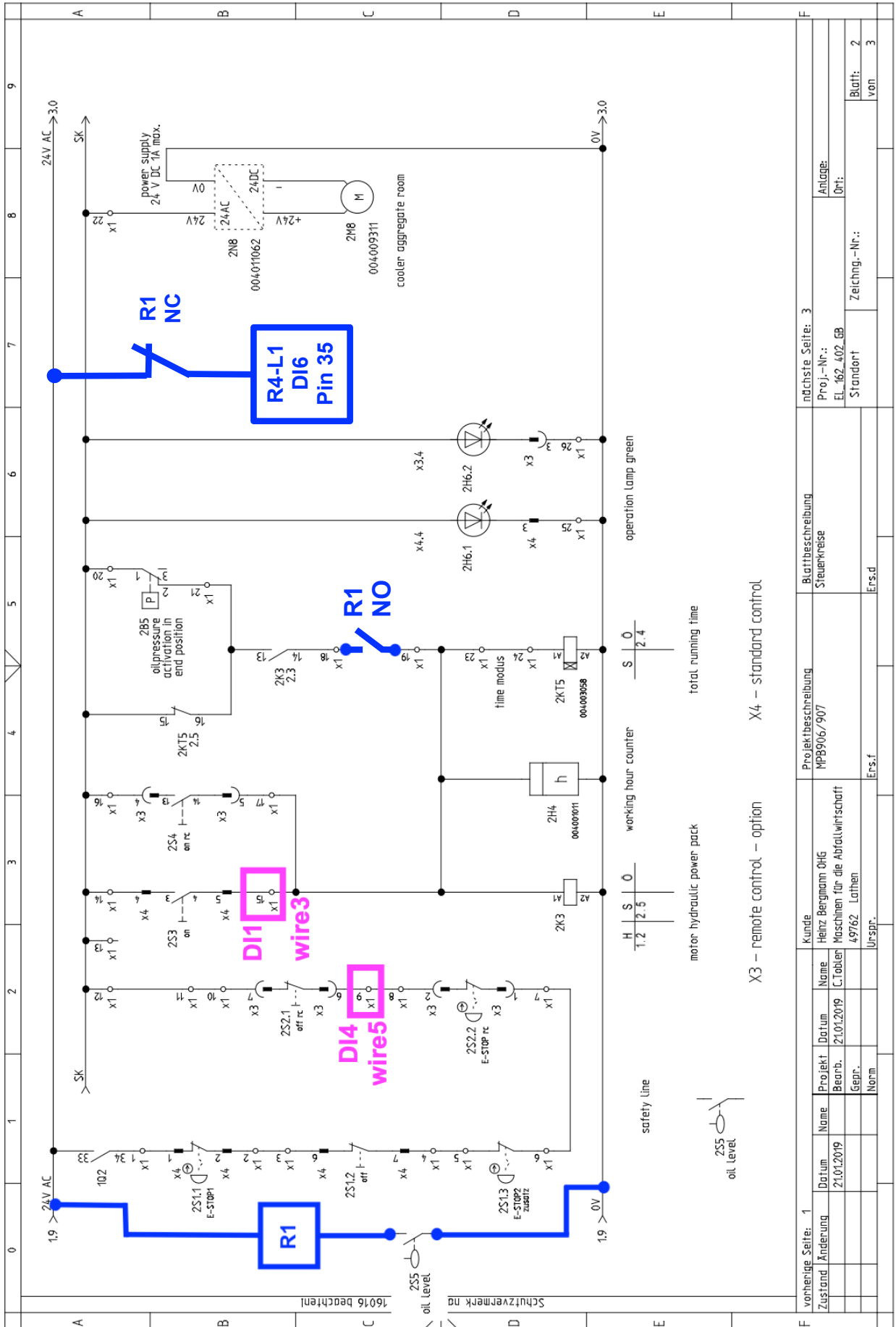
DIGITAL INPUT	R4-L1 PIN NUMBER	DESCRIPTION	WIRE NUMBER	CONNECT TO COMPACTOR'S ELECTRICAL CABINET
POWER +	01	Power supply	1	<u>ref. 24VAC</u> Page 1, block D7
POWER -	02	Power supply	2	<u>ref. 0V -</u> Page 1, block D7
DI1	09	Engine	3	<u>ref. 15</u> Page 2, block B3
DI1 COM	10	Com	-	Bridge to pin 02 of R4-L1
DI2	27	Power	-	Bridge to pin 01 of R4-L1
DI2 COM	28	Com	-	Bridge to pin 02 of R4-L1
DI3	29	80%	4	<u>ref. 43</u> Page 3, block C2
DI3 COM	30	Com	-	Bridge to pin 02 of R4-L1
DI4	31	Emergency	5	<u>ref. 25</u> Page 2, block D6,
DI4 COM	32	Com	-	Bridge to pin 02 of R4-L1
DI5	33	High temperature	-	If there is an available contact on Q1, make this cabling: 24V -> Q1 contact -> pin 33 of R4-L1
DI5 COM	34	Com	-	Bridge to pin 02 of R4-L1
DI6	35	Missing oil	-	<u>Additional relè needed, see schematics</u>
DI6 COM	36	Com	-	Bridge to pin 02 of R4-L1

HOW TO INSTALL R4-L1 ON BERGMANN MP906/MP907

3.2 Bergmann wiring diagrams



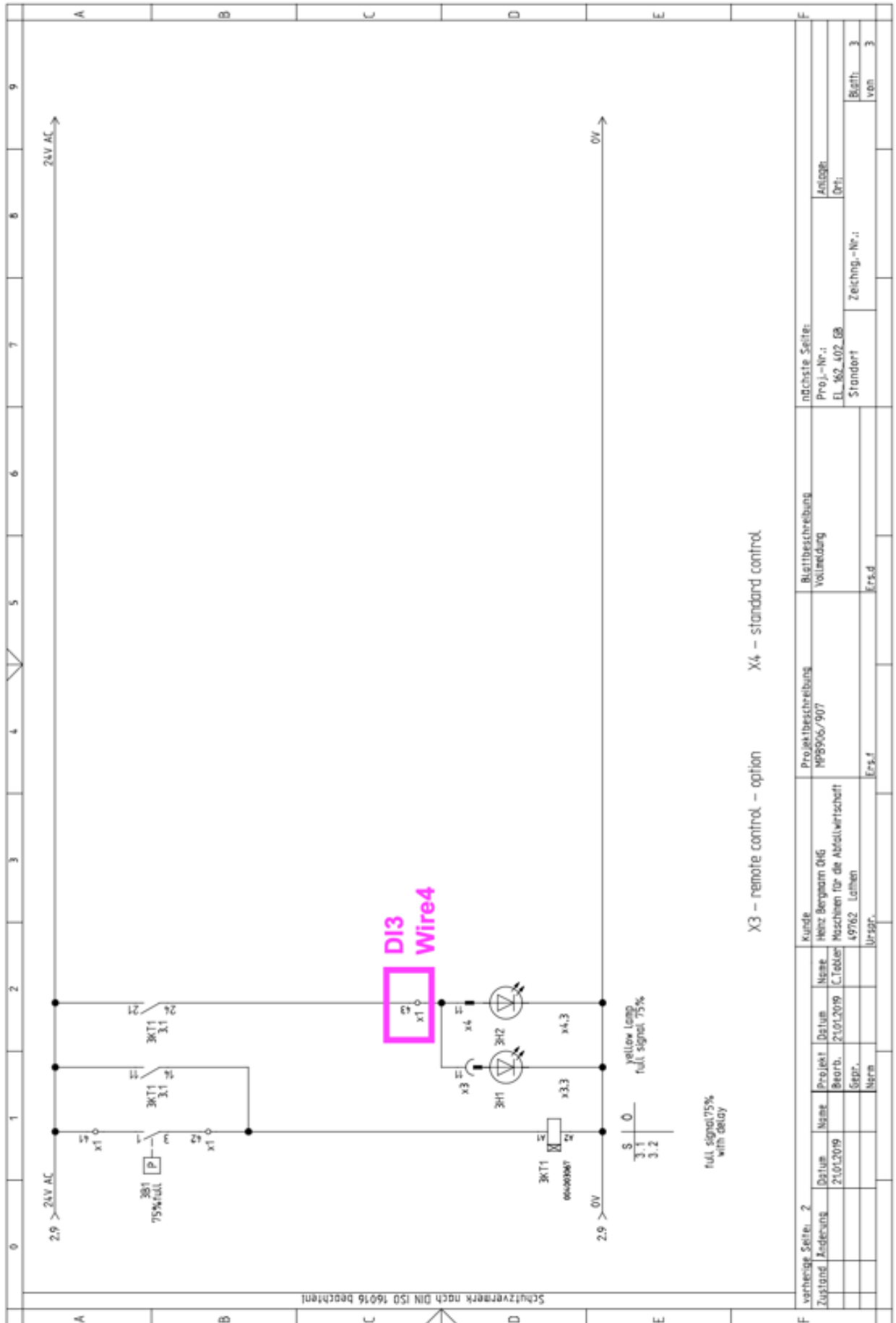
HOW TO INSTALL R4-L1 ON BERGMANN MP906/MP907



X3 – remote control – option
X4 – standard control

vorherige Seite: 1		Kunde		Blattbeschreibung		nächste Seite: 3	
Zustand	Änderung	Datum	Name	Projekt	Datum	Name	Proj.-Nr.:
		21.01.2019	Heinz Bergmann OHG	MP906/907	21.01.2019	C.Tabler	EL_162_402_GB
			Maschinen für die Abfallwirtschaft				Anlage:
			49762 Lathen				Ort:
			Urspr.				Standort
			Ers.f				Zeichng.-Nr.:
			Ers.d				Blatt: 2
							von 3

HOW TO INSTALL R4-L1 ON BERGMANN MP906/MP907



Vertragsnr. 2		Kunde		nächste Seite:	
Zustand	Adresse	Name	Projekt	Datum	Name
		Heinz Bergmann OHG	MP8906/907	21.01.2019	Proj.-Nr.:
		Maschinen für die Abfallwirtschaft		21.01.2019	EL_162_402_08
		49762 Lathen			Standort
		Urzeit			Zeichn.-Nr.:
					Blatt:
					von
					3
					3

4 CONTACT US



R4 srl

Via Branze 44, 25123 Brescia (BS), Italy

Benito Mas y Prat, 5 Planta 1 Puerta 6, C.P.41005 Sevilla

✉ info@r4m.co

🌐 R4m.com