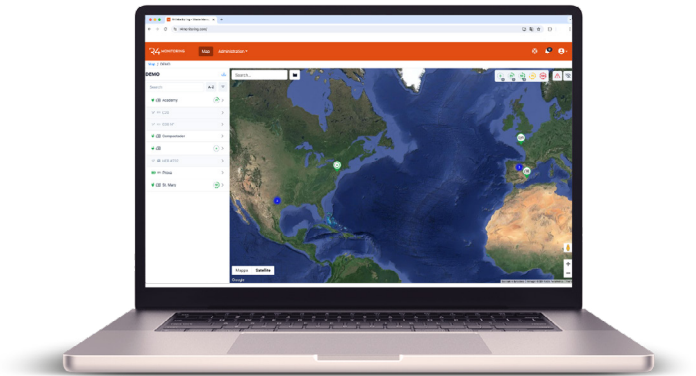


R4 Monitoring's New Features

This update will revolutionize your work and that of your clients thanks to numerous possibilities to interact with the platform. Above all, since **R4 Monitoring is adaptable to all types of machinery**.

You will have a new, **uncluttered** and **easy-to-use layout** with new features that will **improve the logistics management** of your compactor fleets:



Travel section

Travels will be recorded with the following data: departure, arrival, distance, hours and route on the map. In addition, a daily counter and odometer has been added for your drivers

Research function

You can now find your machines quickly by searching them either by location or by serial number

Event History

It has been implemented to save the location from which each signal is transmitted, for example, a breakdown or a full compactor. Then, you can open the coordinates directly on the map. This event history can be filtered by date, event type, and site

Maintenance section

You will no longer have to fear long downtime, because you will have a space on the platform designated to keep track of your entire fleet. Whether it's a breakdown or minor issues, you'll be notified instantly

Ticketing

If you need support from our team, simply open a ticket in the dedicated section

Remote connection to the machinery PLC

You can set up and send safety commands to your equipment directly from your desk or smartphone, wherever you are

Another very important feature we have added to the new version of R4 Monitoring is the **customer profile**:

Login credentials can be created by you in total autonomy. This is more secure for your privacy and that of your clients;

You can leave the view-only setting, or you can unlock the features you see fit to get your clients the data that is most useful for their work;

Basic access provides access to many sections of the platform including the hardware section. Here they will be able to see details of metrics, input mapping and configuration parameters;

The section for managing your customers is simple and neat: you can add them with their various contact details, code and manage their sites (or depots) in a specific territory, and manage users with different levels of permissions.

Other enhancements and updates include:

The **section for managing pickups** for your entire fleet with:

- Site Data;
- Asset;
- Date;
- Material;
- Hours worked;
- Filling.

The **administration section**, from which you can keep track of each piece of equipment and sort them by:

- Filling;
- Type;
- Last Updated.

The **history section**, with added graphs to show:

- Pressures;
- Filling;
- Times of the last 5 cycles of a machine.

The **master data for each machine**, now with much more detail:

- Photo;
- Model;
- Color;
- Year of production;
- Type of material entered.

